



DIRECT FIRED

LPG Vaporizer



DIRECT FIRED

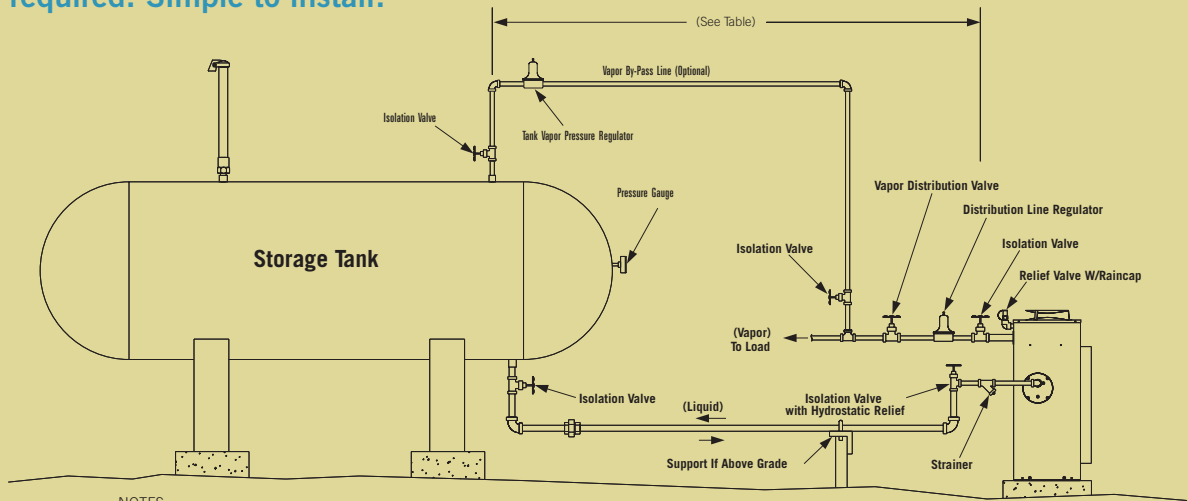
the power of innovation



Algas-SDI Direct Fired vaporizers are designed to convert liquid LPG to LPG vapor for a variety of applications.

No electricity required! Simple to install!

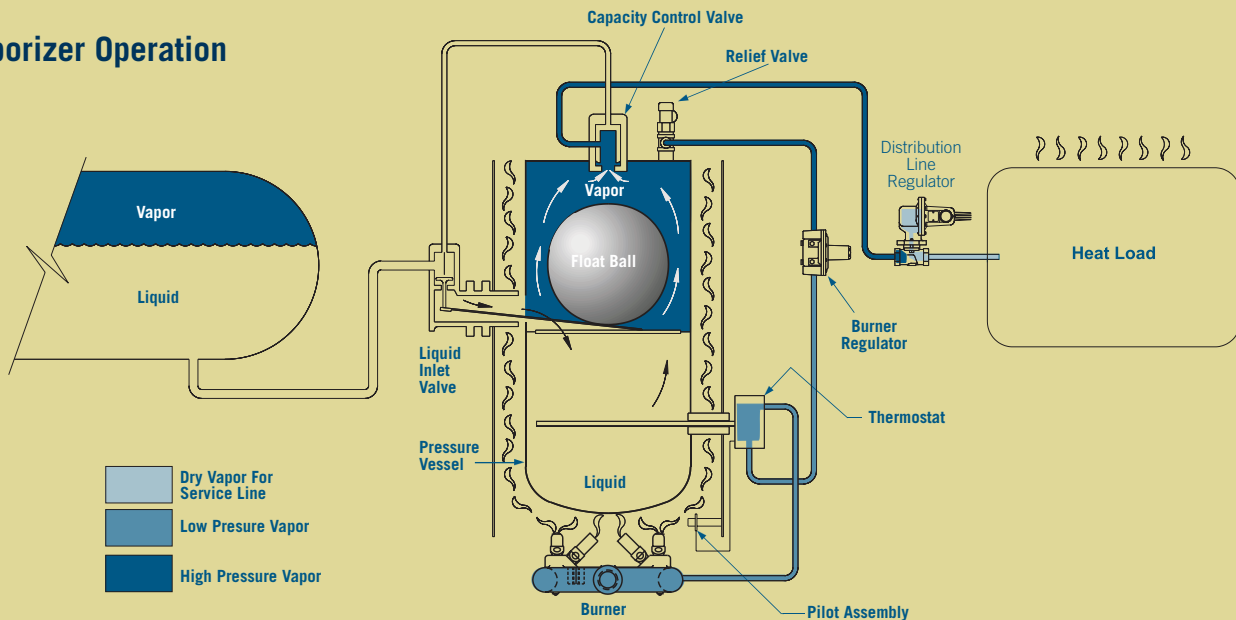
Table	
Exposure	Minimum Distance From Vaporizer Required
Storage tank	10 feet/3M
Storage tank shutoff	15 feet/4.5M
Point of transfer	15 feet/4.5M
Nearest important building or group of buildings or line of adjoining property which may be built upon (except buildings in which vaporizer is installed)	25 feet/7.6M

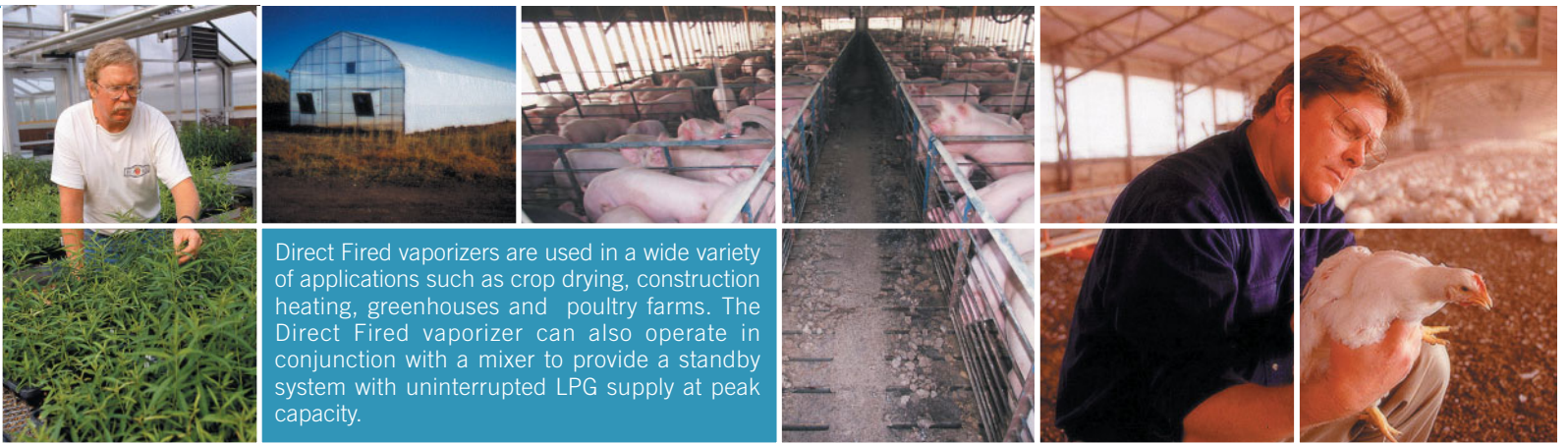


NOTES:

- 1) Hydrostatic head not to be exceeded by liquid piping losses.
- 2) Install Vaporizer Distribution Line Regulator upstream of Tank Vapor pressure connection point.
- 3) Set Distribution Line Regulator 2-4 PSIG/.14kg/cm²-.281kg/cm² higher than Tank Vapor Pressure Regulator set point.
- 4) No check valves in Liquid Line; liquid must be able to flow both directions.

Vaporizer Operation



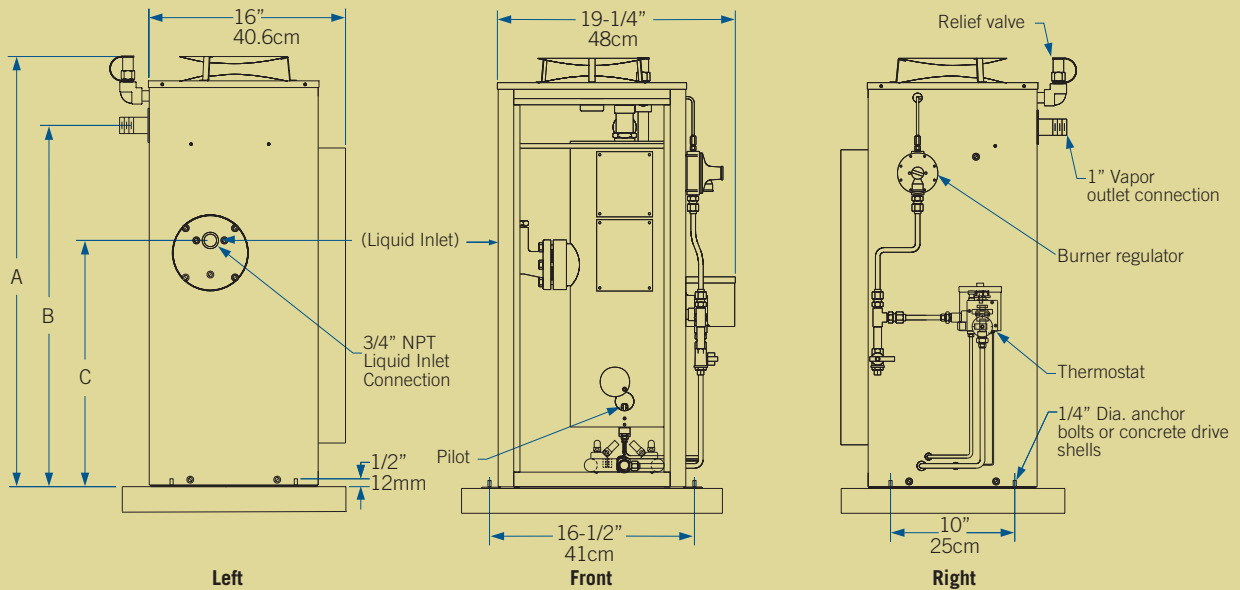


Direct Fired vaporizers are used in a wide variety of applications such as crop drying, construction heating, greenhouses and poultry farms. The Direct Fired vaporizer can also operate in conjunction with a mixer to provide a standby system with uninterrupted LPG supply at peak capacity.

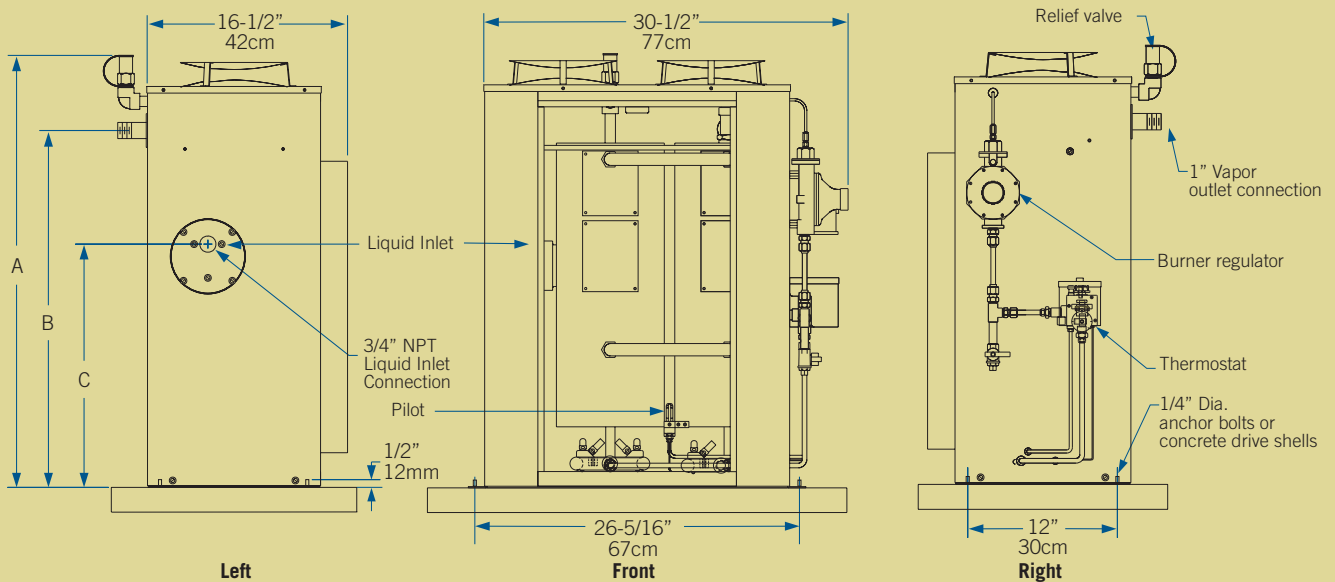
DIMENSIONS

	A	B	C
40/40H	35" (89 cm)	29" (74 cm)	19-3/4" (50 cm)
60/60H	44" (112 cm)	38" (96.5 cm)	28-1/2" (72 cm)
80/40H	35" (89 cm)	29" (74 cm)	19-3/4" (50 cm)
120/60H	44" (112 cm)	38" (96.5 cm)	28-1/2" (72 cm)

40/40H and 60/60H VAPORIZERS



80/40H and 120/60H VAPORIZERS





DIRECT FIRED SPECIFICATIONS

Model		40/40H	60/60H	80/40H	120/60H
Vaporizer Type		Feed Through	Feed Through	Feed Through	Feed Through
Vaporization Capacity					
lbs/hr		176	264	352	528
kg/hr		80	120	160	240
million Btu/hr		3.64	5.46	7.28	10.92
million kcal/hr		0.91	1.37	1.83	2.75
U.S. Gal/hr (nominal)		40	60	80	120
Heat Exchanger					
Surface Area,	ft ²	0.51	0.77	1.02	1.53
	m ²	0.047	0.71	0.94	1.41
Design Pressure,	psig	250	250	250	250
	kg/cm ²	17.6	17.6	17.6	17.6
Burner Heat Input					
BTU/hr		51,360	77,040	102,720	154,080
kcal/hr		12,945	19,414	25,885	38,828
Relief Valve Set Point					
psig		250	250	250	250
kg/cm ²		17.6	17.6	17.6	17.6
Shipping Weight					
lbs.		155	175	220	275
kg.		70.3	79.5	99.8	125
Shipping Dimensions					
in. (Depth x Height x Width)		21" x 41" x 22"	21" x 50" x 22"	21" x 41" x 35"	21" x 50" x 35"
cm. (Depth x Height x Width)		53 x 104 x 56	53 x 127 x 56	53 x 104 x 89	53 x 127 x 89
Approvals		CE, PED(DNV), UL (U.S. and Canada), FM			
Optional Accessories		Automatic Ignition Kit – available in 110V or 220V AC, or 9V DC (Battery), Economy Operation Kit, Filtaire Heavy Ends Filter, Relief Valve Pipe Away Adapter			

Contact Your Distributor Today:



POWER EQUIPMENT COMPANY

2011 Williamsburg Road

Richmond, VA 23231 USA

Ph: 804-236-3800 Fx: 804-236-3882

www.peconet.com



Form DF-0304