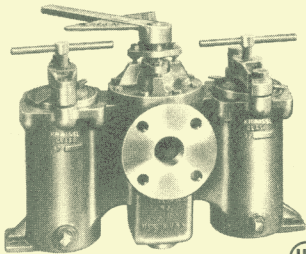




### RUGGED CONSTRUCTION

Cast Iron, Steel, Stainless,  
Bronze and Other Alloys.  
Flanged, Threaded or Weld-End.

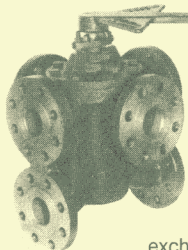
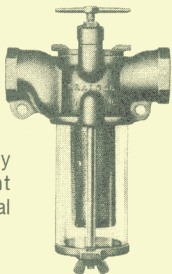


### Model 72 Simplex & Duplex Strainers

For fuel oil, lube oil, cooling water or any fluid service. Protects pumps, nozzles, meters, heat exchangers and process lines. High pressure/temperature special designs.

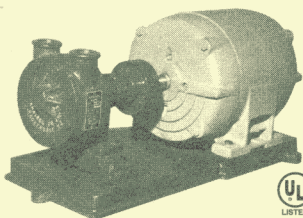
### Model 73 Sea-View Strainers Simplex- Duplex

Cast bronze body with transparent sump permits visual inspection of flow.



### Model 72AA Transfer Valves

Six (6) port plug valve for duplexing two tanks, heat exchangers, filters, or other systems with minimum piping and space. High pressure/temperature special designs.



### Model 60 Pumps

General line of cast iron fuel and lube oil pumps — direct connected for light oils, reduction drives for heavy oils. High temperature special designs.

# STRAINERS, FILTERS, TRANSFER VALVES, TRANSFER PUMPS, AIR PUMPS

KRAISSL COMPANY Incorporated

GENERAL BULLETIN A1803A

## COMPANY CAPABILITIES

The Kraissl Company is a long-time manufacturer of heavy duty simplex and duplex strainers and filters for protecting equipment in pipeline service. Materials of construction include cast iron, bronze, aluminum, steel, stainless steel, and other special alloys. Our complete line of duplex three-way (6-port) transfer valves was developed specifically for use with two filters, two heat exchangers, two supply tanks or with other dual systems. Positive displacement Oil transfer pumps and rotary air pumps are also our specialties. All Kraissl products are manufactured in the U.S.A. to assure high quality workmanship and materials at affordable prices. Authorized Kraissl sales representatives and distributors are located in your area to serve your needs.

## STANDARD PRODUCTS

MODEL 72 SIMPLEX AND DUPLEX STRAINERS AND FILTERS are designed for minimum pressure loss and easy basket accessibility. Cast alloy construction provides both durability and economy. Duplex models include a tapered plug valve with metal-to-metal seat for long life in rough service. Simple one-stroke valve operation allows for continuous flow transfer from one side to the other without interruptions. Duplex types range from 3/4 to 8 inches in pipe size, and simplex up to 12 inches. Cast iron, cast steel, stainless steel and bronze models are stocked in many sizes. Special units can also be manufactured in other alloys. Threaded N.P.T. and A.N.S.I. flanged port units are standard. Butt-weld and socket weld ports are also available. Models for fuel oil and flammable fluid service bear the Underwriters Laboratories (U.L.) label. Kraissl strainers are manufactured in accordance with international standard ASTM F1199. Units can also be furnished to meet Military, Coast Guard, and other specifications where required. Special ports for strainer back-wash and control sensor installations can be provided. Automatic duplex valve actuators and controls are also available.

MODEL 73 SEA-VIEW SIMPLEX AND DUPLEX STRAINERS with transparent plastic sumps and bronze or aluminum bodies are available in pipe sizes up to 4 inches inclusive for low pressure or suction line water service.

Strainer baskets for both the Model 72 and Model 73 series are made of perforated sheet metal, with or without wire mesh liners. Hole openings typically range from .0015 to .375 inches or larger. Patented double-element baskets are available for Model 72 series strainers, providing 30 to 40% more straining area in the same size housing.

## TRANSFER VALVES

MODEL 72AA SERIES Transfer (or Diverter) Valves are used to cost effectively duplex two external pieces of flow equipment with the least amount of associated piping and space. Simple one-stroke valve operation allows for continuous transfer of flow without interruption. Sizes 3/4" through 8 inch are commonly available in cast iron, cast steel, and stainless steel. Internal valve plugs are normally provided in cast iron, stainless steel, or bronze. A broad range of screwed (NPT) port and flanged models including A.N.S.I. Class 125 and 150 through Class 1500 are typically stocked. Cast construction and tapered metal-to-metal valve plug and seat provide durability for long-life. Kraissl Transfer Valves have been accepted for many years in accordance with A.P.I. 614 and other standards for lubrication oil systems.

## ROTARY POSITIVE DISPLACEMENT LIQUID PUMPS

MODEL 60 SERIES PUMPS are Underwriters Laboratories listed for fuel oil service. They incorporate an internal gear design which provides a wide range of applications. The speed of operation is chosen based on the viscosity and flow rate of the liquid at pumping temperature. These cast iron pumps are found on many fuel oil burner installations. For No.1 through No.6 fuel oils, our reduction belt-drive pump sets can be rearranged to increase or decrease supply requirements simply by changing belts and pulleys only, without changing pumps. For heavy oils with viscosities from 150 SSU to 8000 SSU and above, our reduction drive pumps are suggested with pump speed of approximately 400 RPM. Direct drive pump sets are also available for light oils and fluids where 1200 RPM, 1800 RPM, or other special fixed speeds are appropriate. Standard models are rated for pressures up to 100 psig. Capacities range from 1/2 to 200 gpm with high suction characteristics. Port sizes include 3/8 to 2 inch NPT.

MODEL 54 AND 55 CHECK AND FOOT VALVES are also available for use in associated piping.

## ROTARY AIR PUMPS

MODEL 21 cast iron roller pumps and MODEL 25 cast iron vane-type air pumps are available for both vacuum and low pressure air service. Free displacement capacities range from 3/4 to 70 CFM, for vacuums to 28 inches of mercury and pressures to 50 PSIG. Built in, positive lubrication system with oil supply sump is included.



**NEW PRODUCTS:**

In response to changing customer needs, we continue to develop new products and adapt current models to new applications. Examples include special high temperature, high pressure, and corrosive fluid handling. If special non-standard strainers, filters, transfer valves, pumps, or other equipment are required, we will do our best to provide the technical assistance and products you need.

**CONDITIONS OF SALE:**

Quotations subject to change without notice. Orders cannot be countermanded without company consent. Orders for non-stock items are not cancellable. All agreements contingent upon strikes, accidents and other conditions beyond company control.

Acceptance of material from common carrier constitutes a waiver of any claim against the Company for delay or damage in transit. Acceptance of warranty constitutes a condition of sale.

**WARRANTY:**

The Kraissl Company, Inc. warrants the machinery, services and equipment described herein, so far as the same is of its own manufacture, against defects in material and workman ship, under normal use and service for a period of three months from date of starting and not more than one year after date of shipment; the Company's obligation under this warranty being limited, however, to furnishing or repairing without charge, f.o.b. its works, a similar part to replace any part of its own manufacture which within three months from date of starting and not more than one year after date of shipping is proven to have been defective at the time it was shipped, provided the Purchaser has given the Company immediate written notice upon the discovery of such defect. The Company shall have the option of requiring the return of the defective material, transportation prepaid, to establish the claim and shall make the decision as to whether the part is defective.

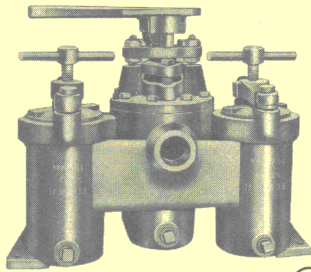
There are no warranties, express or implied, except such express warranties, if any, as are definitely set forth herein. No obligations other than those herein set forth shall be binding upon the Company, including product merchantability.

This Company shall in no event be held liable for damages or delay caused by defective material, shall not be liable for consequential damage in case of any failure to meet the conditions of any guarantee, and the Company will make no allowances for repairs or alternations unless made with its written consent or approval.

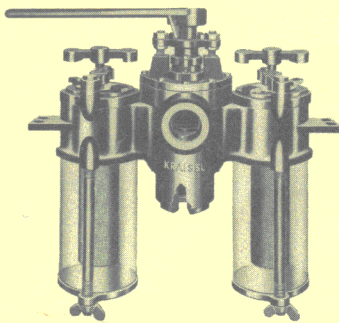
Outside purchased equipment and accessories are guaranteed only to the extent of the original manufacturer's guarantee.

**ILLUSTRATIONS AND SPECIFICATIONS:**

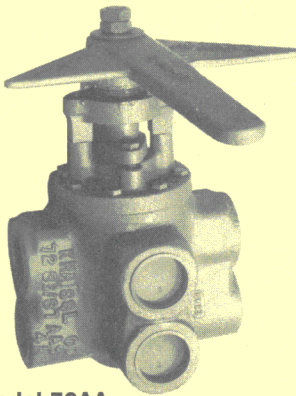
The illustrations in all Kraissl bulletins and drawings are representative of a typical size and model, but all details do not necessarily represent all sizes in that series. The Kraissl Company, Inc. reserves the right to change the design, dimensions or materials of products without notice. Certified dimensions prints and/or letters of conformance can be furnished for standardized and special products if required.



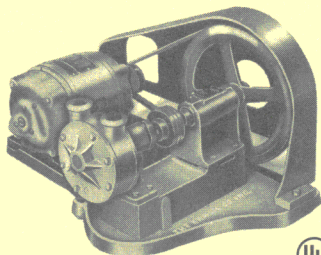
**Model 72**  
Screwed port duplex strainer.



**Model 73**  
"Sea-View" duplex strainer.



**Model 72AA**  
Screwed port transfer valve.



**Model 60**  
Reduction drive transfer pump.



**Power Equipment Company**  
Manufacturers Representative  
2011 Williamsburg Rd. Richmond, VA 23231  
(804) 236-3800 Fax (804) 236-3882