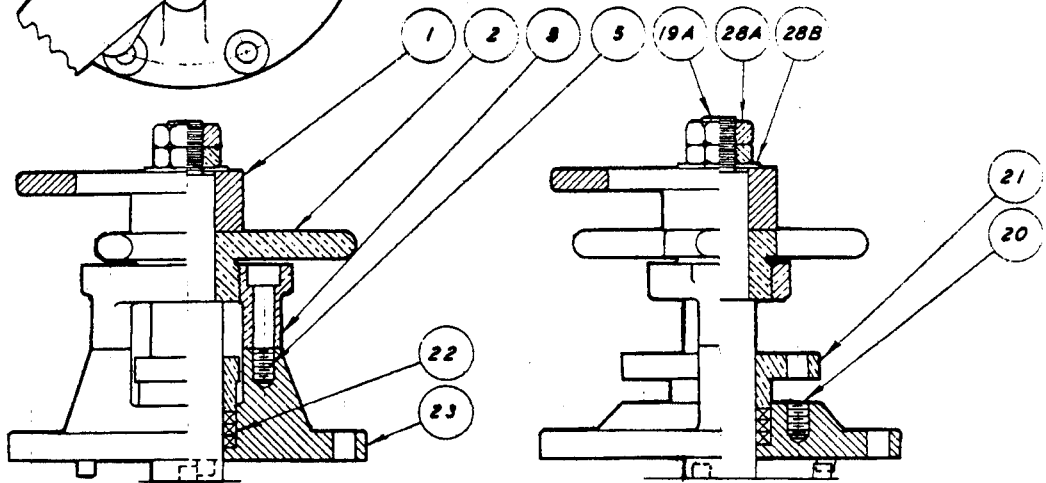
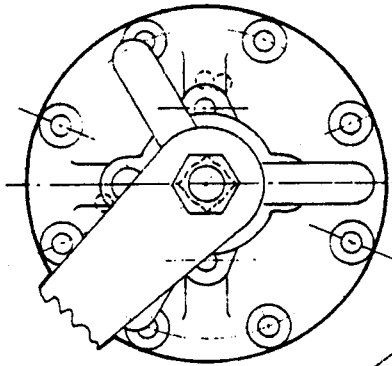


PART NO.	PART NAME	NO. REQ'D
1	VALVE HANDLE	1
2	LIFTING JACK NUT	1
3	LIFTING JACK BRIDGE	1
5	BRIDGE CAP SCREW, not shown	2
19A	VALVE STEM	1
20	GLAND CAP SCREW, not shown	2
21	GLAND	1
22	PACKING	1 set
23	VALVE COVER	1
28A	HANDLE NUT	2
28B	HANDLE NUT WASHER	1



### INITIAL ADJUSTMENT

Turn lifting jack nut clockwise (CW) looking down all the way by hand; assemble washer and brass nut tightly by hand so that washer does not rotate. Back nut off 1/4 turn. Lock with second nut. This procedure should establish adjustment so that 1/3 counterclockwise (CCW) turn of the lifting jack nut will raise the valve plug.

### OPERATION

#### CAUTION - DO NOT OVERLIFT!

Over raising may cause the stop pin on the valve plug to bind on the valve cover.

Fill and pressurize idle side. Lift valve plug by turning three-spoke lifting jack nut counterclockwise (CCW), looking down, just enough to lift the plug from the valve seat. Swing valve handle 90 degrees to switch flow to the other side. Reseat plug by turning jack nut clockwise (CW). Valve handle indicates side in use.

STRAINERS

FILTERS



PUMPS

VALVES

**POWER EQUIPMENT CO.**

*Manufacturers Representative*

2011 Williamsburg Rd. • Richmond, VA 23231

(804) 236-3800 • FAX (804) 236-3882

[www.peconet.com](http://www.peconet.com)

**LIFTING JACK ASSEMBLY  
OPERATING INSTRUCTIONS**

**B3522 (9703)**