

**POWER EQUIPMENT CO.**  
 Manufacturers Representative  
 2011 Williamsburg Rd. • Richmond, VA 23231  
 (804) 236-3800 • FAX (804) 236-3882  
 www.peconet.com

DESIGNED FOR CONTINUOUS FLOW.  
 PORT INTERCONNECTIONS -  
 IN POSITION SHOWN - 1 & 2, 3 & 4.  
 IN OTHER POSITION - 1 & 2, 3 & 4.

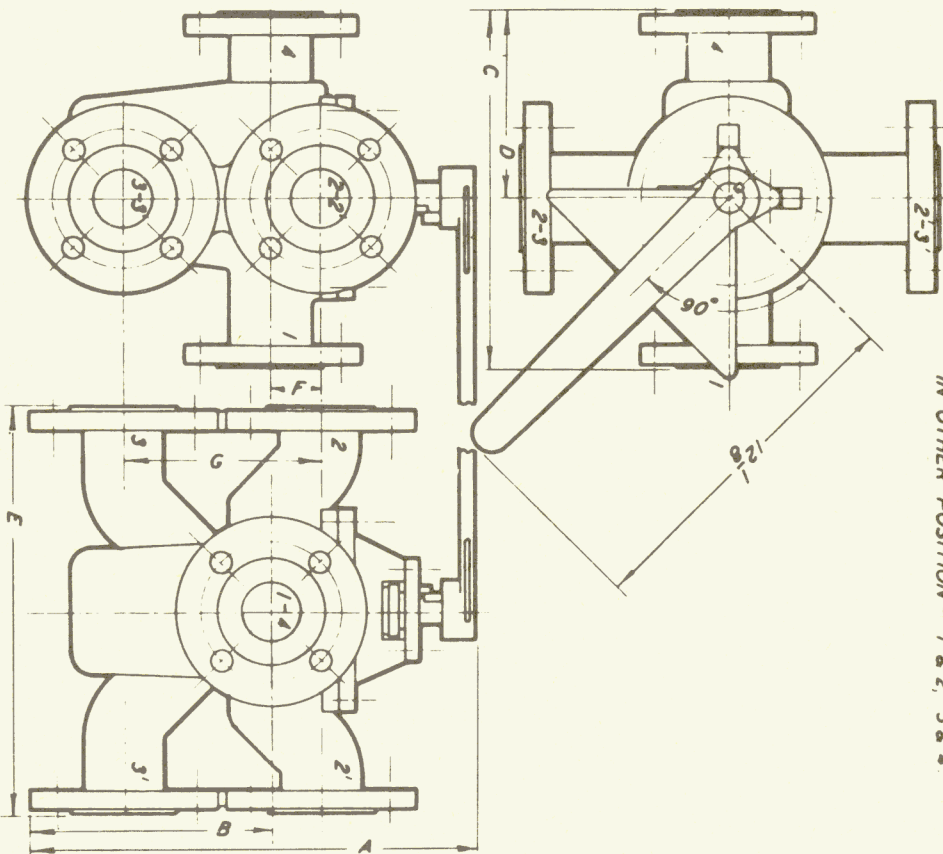


TABLE OF DIMENSIONS - INCHES

MODEL	SIZE	FLG. DIA.	B.C. DIA.	NO. BOLT HOLES	R.F. DIA.	MIN. WGT. (LBS.)	A	B	C	D	E	F	G
<b>150# ASA FLANGES - 275 PSIG. MAX. W.P.</b>													
72-37	1/2	5	3 3/8	4	3/8	55	14	2 7/8	9	8	15	10	1 5/8
72-39	2	6	4 1/2	4	1/2	90	16	3 1/8	12	12	12	12	1 5/8
72-41	2 1/2	7	5 1/2	4	3/4	120	17 1/2	4 1/8	13	13	13	13	1 5/8
72-43	3	7 1/2	6	4	1	141	18 1/2	5 1/8	14	14	14	14	1 5/8
72-47	4	9	7 1/2	4	1 1/8	250	19 3/4	6 1/8	15 1/2	15 1/2	15 1/2	15 1/2	1 5/8
<b>300# ASA FLANGES - 720 PSIG. MAX. W.P.</b>													
72-37	1 1/2	6 1/8	4 1/2	4	3/4	75	15 1/2	7 1/8	9 3/8	10	10	10	1 5/8
72-39	2	6 1/2	5	4	1	110	16 5/8	8 1/8	12 1/2	12	12	12	1 5/8
72-41	2 1/2	7 1/2	5 1/2	4	1 1/8	145	18 1/8	9 1/8	13 1/2	13	13	13	1 5/8
72-43	3	8 1/2	6 1/2	4	1 1/4	170	19 3/8	10 1/8	14 1/2	13 1/2	13 1/2	13 1/2	1 5/8
72-47	4	10	7 1/2	4	1 3/4	295	20 1/2	12 1/8	16 1/2	15 1/2	15 1/2	15 1/2	1 5/8
<b>600# ASA FLANGES - 1440 PSIG. MAX. W.P.</b>													
72-37A	1	4 3/8	3 1/2	4	3/4	75	15 1/8	6 3/4	8 1/2	10 3/8	11	11	1 5/8
72-39A	2	5 1/8	4 1/2	4	1	80	15 3/4	7 1/8	9 1/2	10 3/4	11	11	1 5/8
72-41A	2 1/2	6 1/8	5 1/2	4	1 1/8	100	16 1/2	8 1/8	10 3/4	11 1/2	11 1/2	11 1/2	1 5/8
72-43A	3	7 1/8	6 1/2	4	1 1/4	120	17 1/2	9 1/8	11 3/4	12 1/2	12 1/2	12 1/2	1 5/8
72-47A	4	9 1/8	7 1/2	4	1 3/4	200	18 1/2	11 1/8	13 1/2	15 1/2	15 1/2	15 1/2	1 5/8

\*\* ADD 1/2" TO "A" DIMENSION IF UNIT IS TO BE  
 FURNISHED WITH LIFTING JACK

**THE KRAISSL COMPANY**  
 HACKENSACK, N.J.

**CLASS 72AA STEEL VALVES**  
 OUTLINE DIMENSIONS & DESIGN

DRAWN BY **RCM** SCALE **-**

L.I. NOTE 1-16-62 WDS

DATE **6-14-61**

**B 3528-B**

SUPERCEDES DWG. B3519 B, B3528, B3528A