

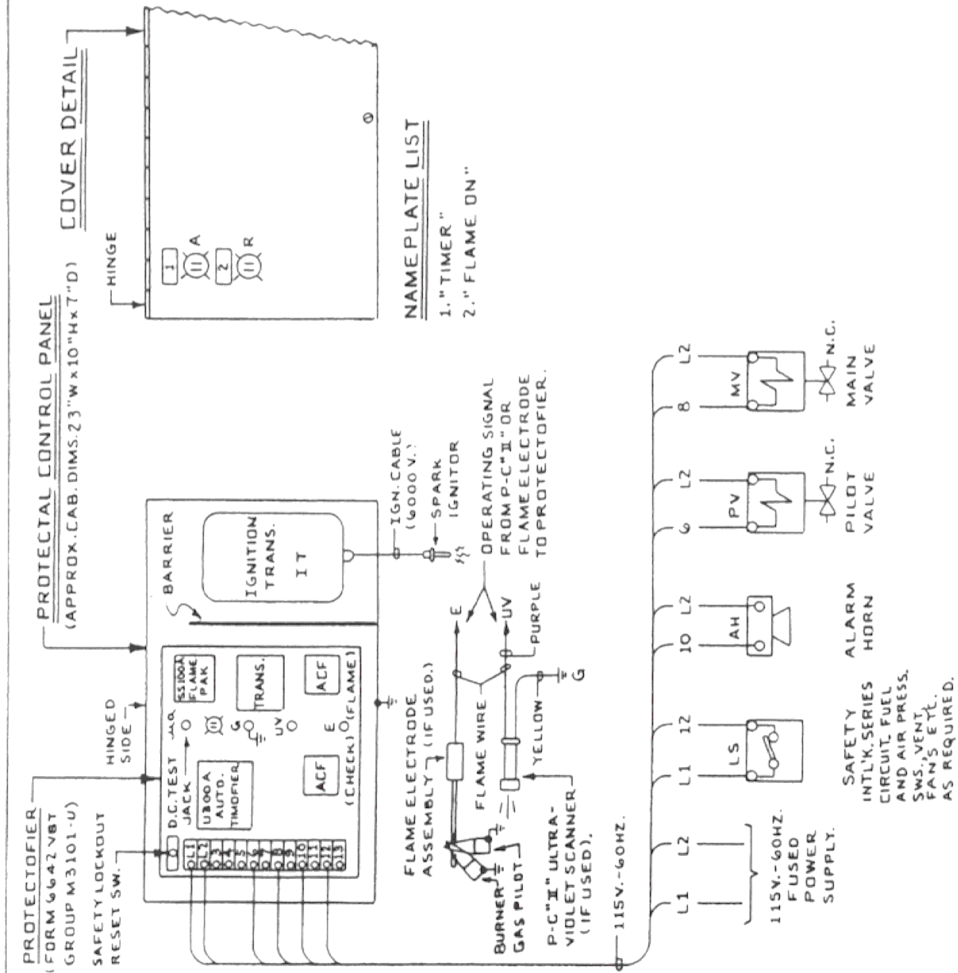
POWER EQUIPMENT CO.

Manufacturers Representative

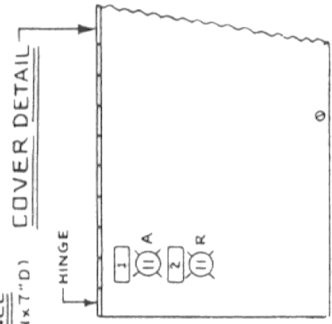
2011 Williamsburg Rd. • Richmond, VA 23231

(804) 236-3800 • FAX (804) 236-3882

www.peconet.com



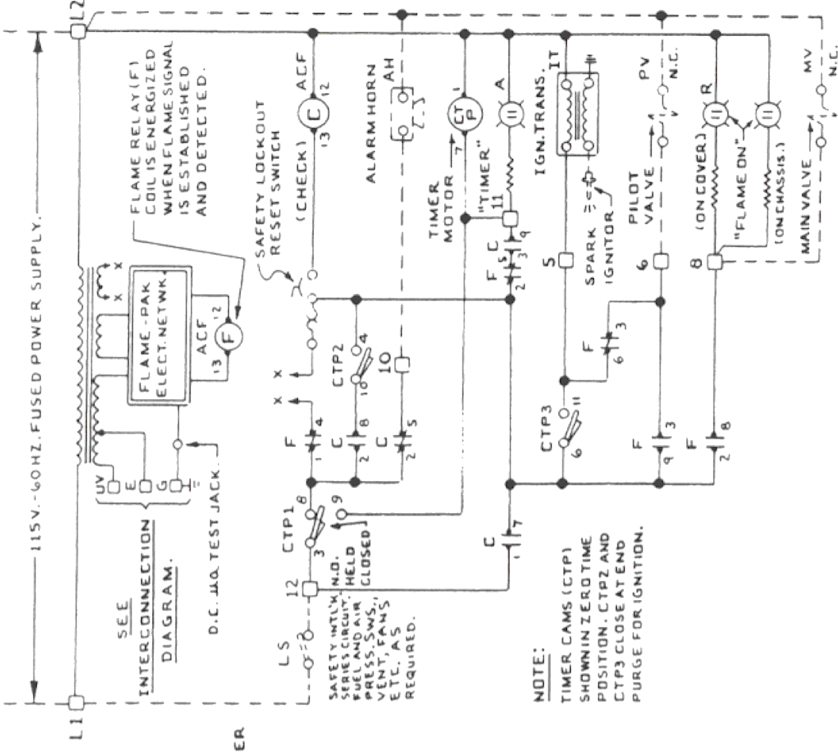
PROTECTAL CONTROL PANEL
(APPROX. CAB. DIMS. 23" W x 10" H x 7" D)



NAME PLATE LIST

- 1. "TIMER"
- 2. "FLAME ON"

PROTECTIFIER
WITH
SS100A FLAME PAK
ACF { C-CHECK RELAY
F-FLAME RELAY
CTP-U3000A AUTO-TIMOFIER
AUTOMATIC OPERATION
SINGLE BURNER
PROTECTIFIER
(FORM 6642-VBT
GROUP M3101-U)
3 4 7 9 13
NO CONNECTIONS.



NOTE:
TIMER CAMS (CTP1
SHOWN IN ZERO TIME
POSITION, CTP2 AND
CTP3 CLOSE AT END
PURGE FOR IGNITION.

NOTE:
INSTALLATION, OPERATION AND MAINTENANCE SHALL CONFORM WITH NATIONAL FIRE PROTECTION ASSOCIATION STANDARDS, NATIONAL AND LOCAL CODES, AND AUTHORITIES HAVING JURISDICTION.

NOTES:
WIRING AND INSTALLATION TO CONFORM WITH NATIONAL AND LOCAL ELECTRICAL CODES. ALL WIRING AND EQUIPMENT EXTERNAL TO PROTECTAL CONTROL PANEL TO BE FURNISHED BY OTHERS UNLESS OTHERWISE SPECIFIED.
FLAME WIRE TO BE NO. 14 TYPE TW, 600 V., INSULATED WIRE OR EQUAL. FLAME WIRE MUST NOT BE IN SAME CONDUITS WITH POWER WIRING.

CIRCUIT DIAGRAM

— INTERNAL WIRING.
- - - EXTERNAL WIRING.

U3000A AUTOMATIC
TIMOFIER TIMING.

RANGE	PURGE (MIN)	IGN. (SEC.)
A-		

PROTECTION CONTROLS, INC. SKOKIE, ILLINOIS	
WIRING DIAGRAM FOR: PROTECTAL NO. 62021-1VBT	
JOB NO.	DATE
H. R. V.	11-5-77
DRAWN BY	X-263

INTERCONNECTION DIAGRAM

R. M. N.